

REPUBLICA DE CHILE

MINISTERIO DE HACIENDA
DIRECCION DE PRESUPUESTOS

Sector Administrativo
Reg. 171/30.03.93
LL

ORD. N° 126

ANT. Carta solicitud de
Sociedad Genética de
Chile.

MAT. Solicita Subvención
1993.

REPUBLICA DE CHILE			
PRESIDENCIA			
REGISTRO Y ARCHIVO			
NR.	93/6735		
A:	31 MAR 93		
P.A.A.	<input type="checkbox"/>	R.C.A.	<input type="checkbox"/>
C.B.E.	<input checked="" type="checkbox"/>	M.L.P.	<input type="checkbox"/>
M.T.O.	<input type="checkbox"/>	E.D.E.C.	<input type="checkbox"/>
M.Z.C.	<input type="checkbox"/>		<input type="checkbox"/>

SANTIAGO, 31 MAR 1993

DE: DIRECTOR DE PRESUPUESTOS

A : SR. JEFE DE GABINETE DE LA PRESIDENCIA
DE LA REPUBLICA.

ARCHIVO

Se ha recibido en este Ministerio, carta solicitud de la Sociedad Genética de Chile, a través de la cual se solicita un aporte de \$ 3.000.000.- con el fin de financiar gastos para la impresión de un documento para la postulación en Inglaterra en el presente año, para que Chile sea Sede del XVIII Congreso Internacional de Genética, para el año 1998.

La asignación de los recursos contemplados en la Ley de Presupuestos, para esta finalidad, requiere de la autorización previa de S.C. el Presidente de la República, por lo que es necesario que US. recabe un pronunciamiento al respecto.

Saluda atte. a Ud.



JOSE PABLO ARELLANO MARIN
Director de Presupuestos



SOCIEDAD DE GENETICA DE CHILE
JOSE PEDRO ALESSANDRI 774
CASILLA 147 SANTIAGO CHILE
FAX: 2392067

SANTIAGO, Marzo 23 de 1993

MINISTERIO DE HACIENDA
OFICINA DE PARTES

26 MAR 1993

BANDEJA..... 19
TARJETA..... 07
LINEA 9

EXCELENTISIMO SEÑOR
DON ALEJANDRO FOXLEY
MINISTRO DE HACIENDA
PRESENTE

Excelentísimo Señor Ministro:

La Sociedad de Genética de Chile ha recibido la proposición por parte de "The International Genetics Federation" para que Chile postule como Sede del XVIII Congreso Internacional de Genética, a realizarse en Agosto de 1998.

La Sociedad de Genética de Chile agrupa más de cien genetistas de las más diversas especialidades: Genética Humana, Genética Médica, Genética Animal y Vegetal, Inmunogenética, Genética Molecular y otras. La Sociedad desde su fundación hace ya 26 años ha realizado regularmente una Reunión Anual en distintas ciudades del país a fin de impulsar el desarrollo de esta disciplina. The International Genetics Federation, entidad que agrupa a Sociedades de Genética de todo el mundo, ha querido reconocer el esfuerzo de nuestra Sociedad y el auge de nuestro país y nos ha propuesto postular para organizar en Chile el mencionado Congreso Internacional. Este es un evento, que se realizaría por primera vez en Latinoamérica y agruparía alrededor de 3.000 genetistas venidos de todo el mundo. Ya contamos con el apoyo de las Universidades Chilenas, CONICYT, la Asociación Latinoamericana de Genética (ALAG), I.C.S.U., Sociedad de Biología de Chile, Academia Chilena de Ciencias y Ministerio de Relaciones Exteriores. En estos momentos esta en trámite el apoyo del Ministerio de Educación.

La Genética como disciplina científica se vería muy beneficiada, con un evento de esta naturaleza, puesto que se contaría con eximios genetistas, expertos mundiales en sus especialidades, que podrían dictar cursos, seminarios y conferencias, para entrenar a científicos chilenos y latinoamericanos.

Por las razones expuestas, nos permitimos solicitar al Señor Ministro, nos conceda el patrocinio oficial, para llevar a cabo nuestra postulación formal, que deberemos presentar en Inglaterra en Agosto de 1993.

Esta postulación deberá ser similar a la que le adjunto la que corresponde a aquella con la cual los Ingleses obtuvieron la organización para 1993. Estimamos que el costo de elaboración de 500 ejemplares de un documento similar es de \$ 3.000.000 (tres millones de pesos). Solicito a usted tenga a bien considerar la posibilidad de que su Ministerio nos aporte con una parte o la totalidad de esos fondos ya que nuestra Sociedad no tiene fines de lucro y se mantiene solo con las modestas cuotas societarias, fondos que están comprometidos en el funcionamiento básico de ella.

Esperando una acogida favorable a nuestra solicitud, le saluda muy atentamente,

DIRECTOR DE PRESUPUESTOS

29 MAR 1993

N° 1238

MINISTERIO DE HACIENDA
JEFE DE GABINETE
REG.HDA. B-548
FECHA: 26/3/93

PROF. DR. DANIEL FRIAS
PRESIDENTE
SOCIEDAD DE GENETICA DE CHILE

PROPOSAL TO

Host the
XVII International Congress of Genetics
at the
International Convention Centre
Birmingham, England
August 1993



THE GENETICAL SOCIETY

President

Dr. N. E. Murray, FRS
Department of Molecular Biology
University of Edinburgh
King's Buildings, Mayfield Road
Edinburgh EH9 3JR
Tel: 031-667 1081 Extn. 2729

Senior Secretary

Dr. M. J. Lawrence
Department of Genetics
University of Birmingham
P.O. Box 363
Birmingham B15 2TT
Tel: 021-414 5915

Junior Secretary

Dr. R. N. Jones
Department of Agricultural Botany
University College of Wales
Penglais, Aberystwyth
Dyfed SY23 3DD
Tel: 0970-623111 Extn. 3077

Date 15 June 1988

Our reference

Your reference

Professor V. L. Chopra
President
International Genetics Federation
Biotechnology Centre
Indian Agricultural Research Institute
New Delhi 110012
India

Dear Professor Chopra

The Genetical Society of Great Britain invites you and the members of the International Genetics Federation to hold the XVIIth International Congress of Genetics in this country in August 1993.

There are, in our view, three chief reasons why this Congress should be held here. First, as you are no doubt aware, by that time it will have been over 50 years since a Congress was last held in the UK and 30 years since one was held in Europe. On these grounds alone we feel that a Congress held in this part of the world is long overdue.

Second, we can offer as a venue for this Congress, the new International Convention Centre in Birmingham, Britain's second largest city. Because of its central position, Birmingham can be reached easily by road, rail and air from Europe and elsewhere. The new International Convention Centre, due to open in 1991, will have the capacity to house a meeting of 4500 delegates on one site in the centre of this thriving city. In addition, we can offer over 4000 beds in hotels and 3800 in cheaper university accommodation within two miles of the Convention Centre. For all of these reasons, we feel that Birmingham is an ideal venue for this Congress.

Third, and perhaps of the most importance, the range and volume of activity in genetics and allied fields of science in the UK and Europe guarantees that we can muster the necessary intellectual resources to plan and to organise the scientific programme of an international meeting of this kind.

We hope that you and the members of the Federation will feel able to accept this invitation and consequently, that we will have the opportunity to welcome you to Birmingham in 1993.

Yours sincerely

Noreen E. Murray

Noreen E. Murray



10 DOWNING STREET
LONDON SW1A 2AA

THE PRIME MINISTER

11 July 1988

Dear Dr. Lawrence,

Thank you for your letter of 6 June. I was most interested to hear of your request to the International Genetics Federation that the XVIIth International Congress of Genetics be held in Birmingham in 1993.

I understand that the Conference will be self-financing and that you have approached the City of Birmingham for a loan to fund preliminary planning for it.

The Society's standing with geneticists worldwide, coupled with the excellent facilities available at Birmingham, will provide an excellent stage for the Congress and I very much hope that your bid will be successful.

Yours sincerely

Raymond Shaker

Dr. M. J. Lawrence

From: Dr P.T. Warren



The Royal Society

6 Carlton House Terrace, London, SW1Y 5AG

Telephone 01-839 5561 Ext. 267 Telex 917876

16 May 1988

Members of Council,
International Genetics Federation

Dear Councillor,

XVII INTERNATIONAL CONGRESS OF GENETICS 1993

The Royal Society is delighted to express its strong support for the invitation from The Genetical Society for the XVII International Congress to be held in Birmingham in 1993.

The Royal Society is the national scientific academy for the UK and is the adhering body to the International Council of Scientific Unions and to its component bodies, in particular the International Union of Biological Sciences.

Should the invitation from the Genetical Society be successful the UK Organizing Committee will be welcome to apply to the Royal Society for a grant to assist in the organization of the Congress.

Yours faithfully,

Executive Secretary

Ref: PTW/MHS

IOB

Institute of Biology

Incorporated by Royal Charter

From the President
Dr R W J Keay CBE

20 Queensberry Place, London SW7 2DZ
Telephone: 01 581 8333

21 June 1988

Professor V L Chopra
President
International Genetics Federation
Biotechnology Centre
Indian Agricultural Research Institute
New Delhi 110012
India

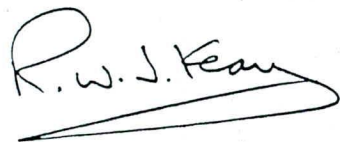
Dear Professor Chopra

The Institute of Biology is pleased to give strong support to the invitation by the Genetical Society to host the XVII International Congress of Genetics in Birmingham in August 1993. The study of genetics, both basic and applied, is particularly strong in the United Kingdom, and the Genetical Society is an excellent organization well able to carry out the considerable task that the holding of an international congress always involves.

Birmingham is a first class centre for a large scientific congress. It is easily accessible by air, by rail and by road; it is a fine city with many facilities for education, entertainment and general interest. Furthermore it is well situated for interesting day trips to beautiful and interesting places, including Stratford-on-Avon, Ironbridge (with a fine series of modern museums illustrating the beginning of industrialization), the Welsh hills, the Cotswolds and much else besides. Of special importance to this particular Congress is the strong Department of Genetics in the large and progressive University of Birmingham.

A decision to hold the 1993 Congress in Birmingham will be greatly welcomed by biologists and by many others in the United Kingdom.

Yours sincerely



R W J Keay



TELEPHONE
021 235 2042

THE LORD MAYOR'S PARLOUR,

THE COUNCIL HOUSE,

BIRMINGHAM, BI 1BB.

JM/JT

July 19th, 1988

Professor V.L. Chopra,
President,
International Genetics Federation

Dear Professor Chopra,

As Lord Mayor of Birmingham I have been made aware of your Congress in 1993 and of your interest in using our International Convention Centre as your venue.

I would like to add my voice to those who are encouraging you to confirm Birmingham as the venue as I believe you will find not only a facility unmatched in Europe, but a City which wants and can provide for the needs and wishes of your delegates. Birmingham has a growing reputation as a friendly and welcoming place and is used to receiving visitors from all over the world, following the success of our National Exhibition Centre which, since its opening in 1976, has hosted hundreds of exhibitions and many conferences and conventions.

I hope and trust you will decide to use Birmingham's International Convention Centre and I know the City will do all it can to make your Congress a great success.

Yours sincerely,

Harold Blumenthal

Councillor H. Blumenthal
Lord Mayor of Birmingham



UNIVERSITY OF BIRMINGHAM
P.O. BOX 363
BIRMINGHAM B15 2TT UNITED KINGDOM
TELEPHONE 021-414 4536
FAX 021-414 4534

FROM THE VICE-CHANCELLOR AND PRINCIPAL
PROFESSOR MICHAEL THOMPSON, DSc FInstP

MWT/AFW

10 May 1988

Dear Dr Lawrence

XVIIth International Congress of Genetics

I am very pleased to be able to give my support, and the support of the University of Birmingham, to the Genetical Society's bid to host the XVIIth International Congress of Genetics. I am sure those attending would appreciate the amenities of the University and the City of Birmingham.

I wish you every success in this endeavour.

Yours sincerely
Michael Thompson

Dr. M. J. Lawrence
Department of Genetics
University of Birmingham

Birmingham is a city of enterprise. From the dominant role in establishing Britain as the forerunner of the Industrial Revolution, to its more recent

successful transition from a city of manufacturing to one now aware of the increasing benefits of attracting business visitors and tourism generally.

In the early 1970's, the City took a dramatic and imaginative decision to build the United Kingdom's National Exhibition Centre, now in its eleventh year, and acclaimed a remarkable success.

The NEC attracts nearly four million visitors a year and is itself undergoing an expansion programme which, it is envisaged, will double the size of the Centre to over two million square feet (185,000 square metres) in the next twenty years.

In recent years, there has been a dramatic increase in the number of conference visitors to the City, highlighted best by the 1984 Rotary International Convention held at the NEC which alone attracted 23,500 Rotarians, 14,000 from overseas.

The City, inspired by this growth in conference business, and aware of the need to regenerate an economy once dominated by a now much smaller manufacturing base, decided to build an International Convention Centre, the rival of anything in the world, and due to open in early 1991.



BIRMINGHAM - THE CONVENTION CITY

A meeting facility designed for the user, the conference planner and conference delegate, within a building offering a blend of exciting architecture and functional layout.

The International Convention Centre Birmingham has been designed at a time when the world is experiencing a revolution in communications technology — the meeting planner and conference delegate will therefore benefit from the availability of all the latest systems.

A comprehensive range of services will be developed to support the users of the Convention Centre. Many of the services will be provided automatically as part of the cost package. These services will include full technical staffing to

operate the wide range of permanently built-in sound, lighting, theatre and audio visual equipment, registration with information stewards, cloak-rooms, security and catering.

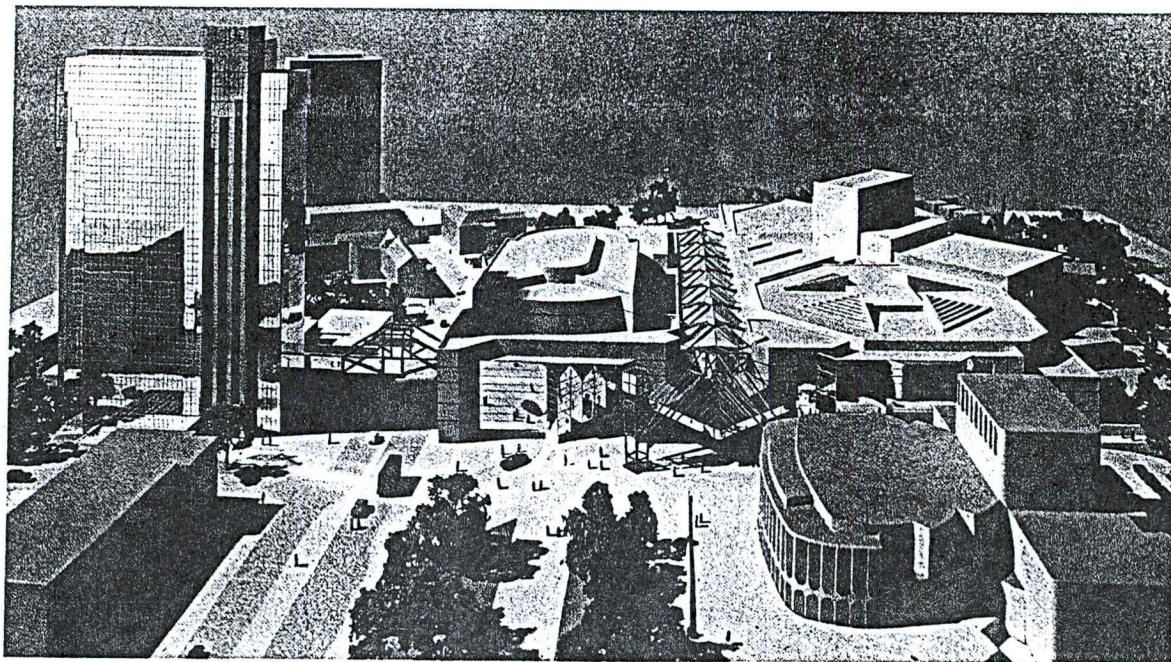
Within a few minutes' walking distance of the Convention Centre, the delegate will be able to enjoy the amenities of the City, which has now embarked upon a rapid redevelopment and growth programme, where leisure and other requirements of the business tourist or conference delegate will be met successfully.

The ICC itself is part of a massive redevelopment programme which will incorporate new hotels, restaurants, street cafes and shops, which, when linked with the existing theatres and major department stores, will make Birmingham a truly

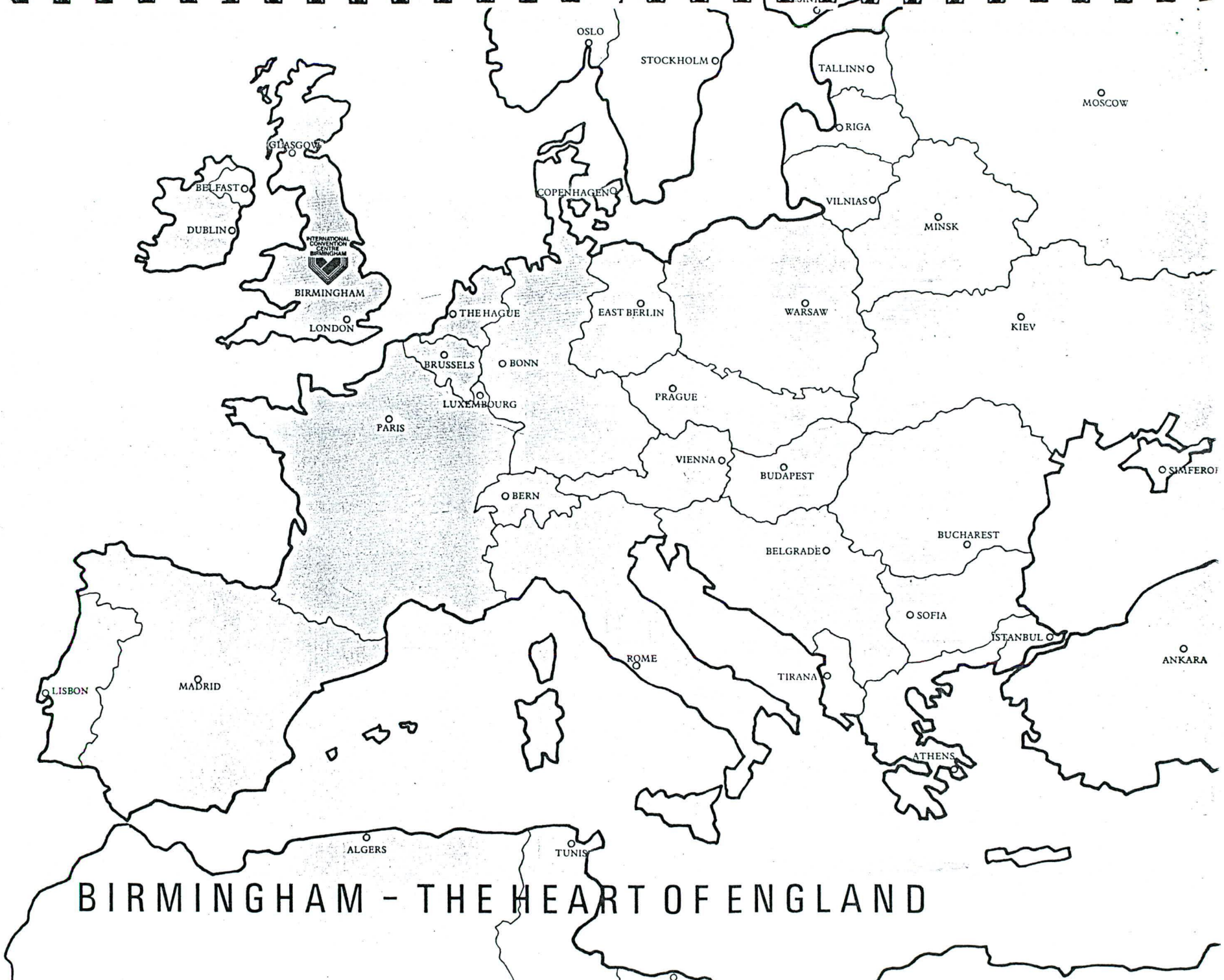
International Convention City.

Constructed on a 58 acre site in the city centre, it will have an exciting and impressive main entrance, leading to a glass covered mall offering a pleasing and bright environment with convenient access to each of the eleven halls. Registration and cloakroom facilities are located on the first floor.

Existing and new hotels will be within easy reach, including the new Hyatt Regency which will have a secure link direct to the Convention Centre.



THE VENUE



BIRMINGHAM - THE HEART OF ENGLAND

LISBON

MADRID

ALGERS

TUNIS

ROME

TIRANA

ATHENS

ISTANBUL

ANKARA

SOFIA

BUCHAREST

BELGRADE

BUDAPEST

VIENNA

BERN

PARIS

LUXEMBOURG

BRUSSELS

BONN

PRAGUE

EAST BERLIN

WARSAW

KIEV

MINSK

VILNIUS

RIGA

TALLINNO

STOCKHOLM

COPENHAGEN

OSLO

MOSCOW

DUBLIN

BELFAST

GLASGOW

BIRMINGHAM

LONDON

THE HAGUE



INTERNATIONAL CONVENTION ON THE BIRMINGHAM

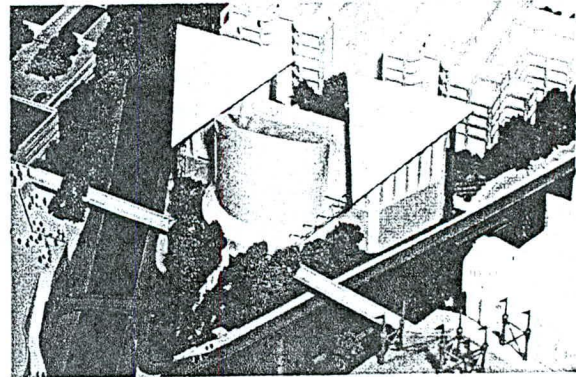
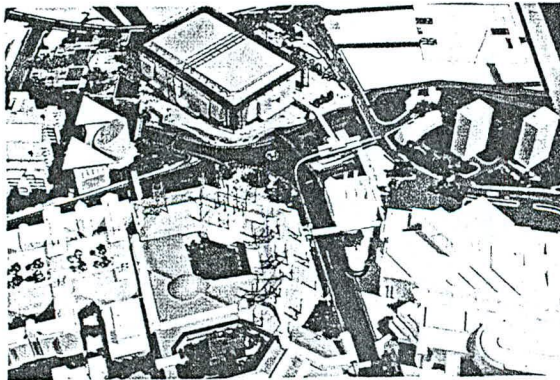
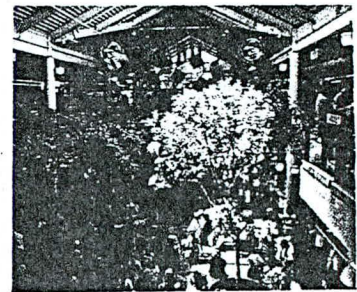
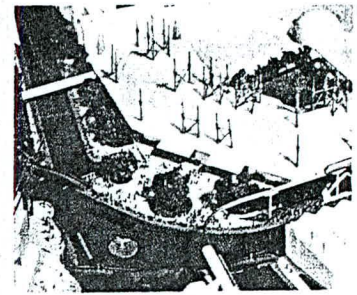


One of the most attractive features for convention delegates will be Brindley Place, an exciting development taking place around the junction of four canals — alongside the International Convention Centre.

Styled on the highly successful Harborplace in Baltimore, Brindley Place will be a relaxing environment through which delegates can wander. It will house an array of informal eating places; restaurants; a host of speciality shops in a Festival Market Place; a heritage museum; gardens; art; sculpture and an Omnimax cinema housed

within a large dome. There will also be a multiplex (multi-screen) cinema. A spectacular Aquarium is also projected as a major attraction.

Brindley Place opens in early 1991, it will be the setting for a host of entertainment and cultural "happenings". Developed by the highly experienced Merlin-Shearwater-Laing consortium, the £250 million attraction will occupy more than 35 acres along Broad Street, Birmingham. Brindley Place will be a remarkable addition to the city's infrastructure of visitor attractions.



▲ ICC AND BRINDLEY PLACE



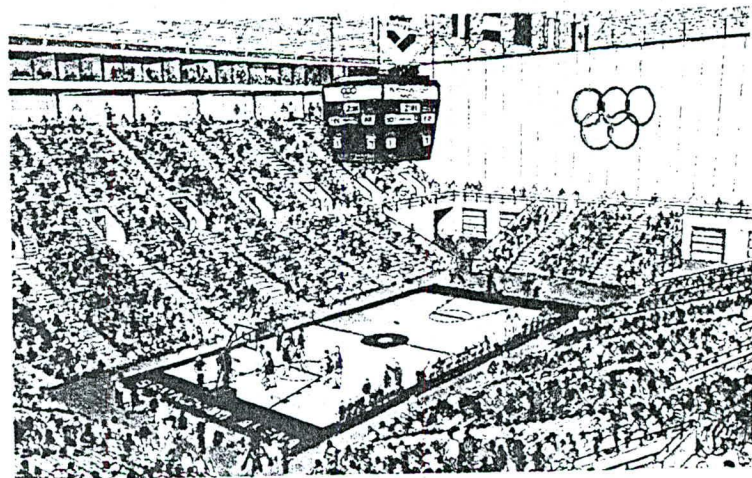
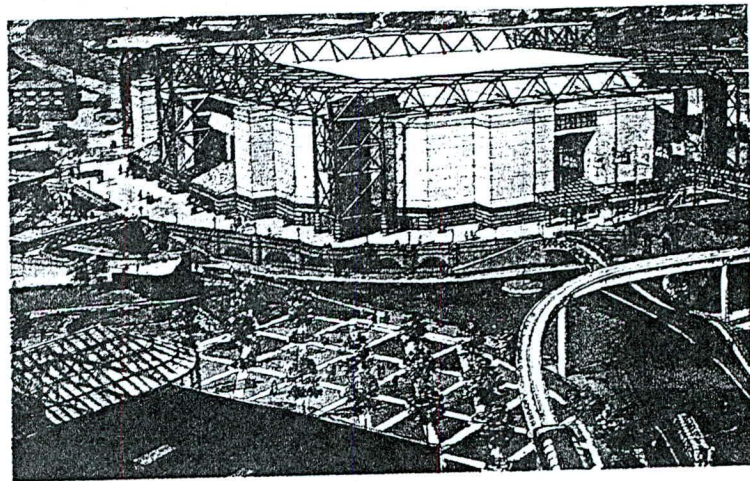
By far the largest building within Brindley Place will be the new National Indoor Arena. Destined to be the home of major national and international sporting events, the Arena will house up to 8,000 sports fans or up to 12,000 attending entertainment events or convention plenary sessions.

A flexible, clear-span interior (approximately 12,000 square metres) will be ideal for a host of events and there are extensive catering, box office and other support facilities. There is also a covered link (over the canal) into the International Convention Centre so that the two buildings can operate in close partnership.

The Arena is a spectacular 12,000 square metre building designed for the Merlin-Shearwater-Laing consortium by top US Arena Architects, HOK of Kansas City. Funding for the Arena and a 2,800 capacity car park has also been made available by Birmingham City Council and the Sports Council. The Arena is scheduled to open in early 1991.

This proposal is subject to the completion of the National Indoor Arena.

The construction of the National Indoor Arena and Brindley Place are conditional upon the exchange of contracts between Merlin Shearwater Laing and the City of Birmingham proposed for October 1988, and no contracts for the letting of the National Indoor Arena can be entered into prior to this date.



NATIONAL INDOOR ARENA



1. REGISTRATION

A centrally located area for registration to be operational from Saturday to Saturday.

2. OPENING CEREMONY
AND PRESIDENTIAL
ADDRESS

A facility to seat 4,500 people.

3. PLENARY LECTURES

A facility to seat 4,500 for daily lectures.

4. SYMPOSIA

A minimum of five lecture theatres each to seat 400-2,000 people for simultaneous symposia.

5. WORKSHOPS

A minimum of ten lecture rooms seating between 120 and 2,000 in which to conduct simultaneous sessions.

6. EXHIBITION

An exhibition hall of approximately 3,000 square metres in which to stage the Allied Trade Exhibition.

7. POSTERS

A hall of up to 3,000 square metres in which to site the Posters.

← **CONFERENCE REQUIREMENTS**

MEETING FACILITIES

INTERNATIONAL
CONVENTION
CENTRE
BIRMINGHAM





REGISTRATION

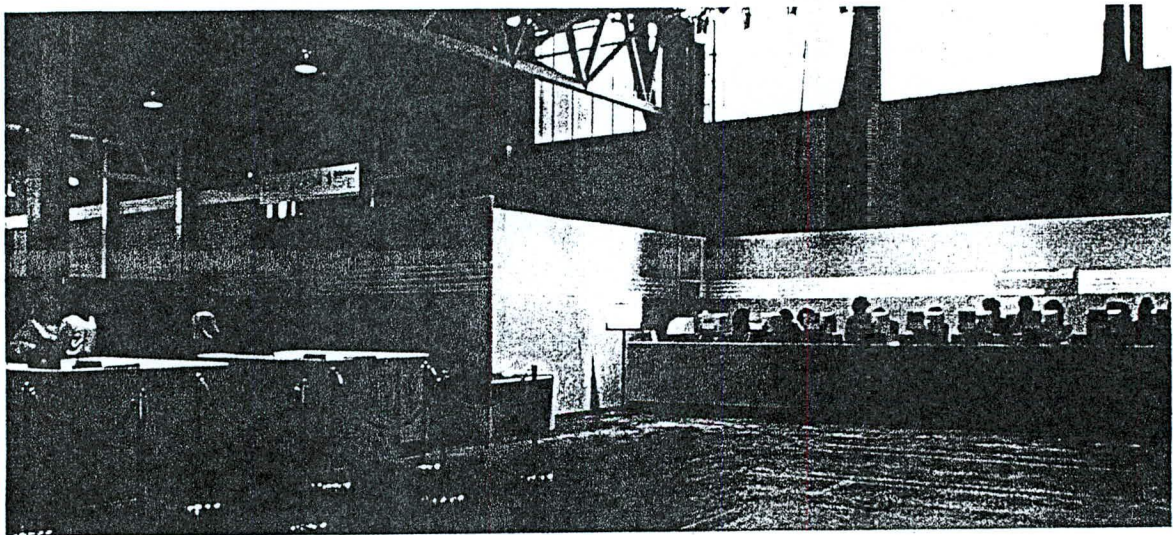
Located one level up from the Mall, THE REGISTRATION AREA is large enough to meet the Congress requirements.

The design of the International Convention Centre, Birmingham recognises that an efficient registration service plays a vital role in the successful staging of an international conference, and therefore, ample space, facilities for computers, additional workspace and good clear signing

(multi-lingual if required) will all be provided.

The assistance of venue staff to offer guidance and information to delegates will be available if desired.

The Registration Area is conveniently situated close to all visitor services i.e. cloakrooms, toilets, telephones, banks and shops.



THE ANSWER



THE NATIONAL INDOOR
ARENA

OPENING CEREMONY AND
PRESIDENTIAL ADDRESS

The National Indoor Arena lies adjacent to the International Convention Centre and is directly linked by a covered walkway.

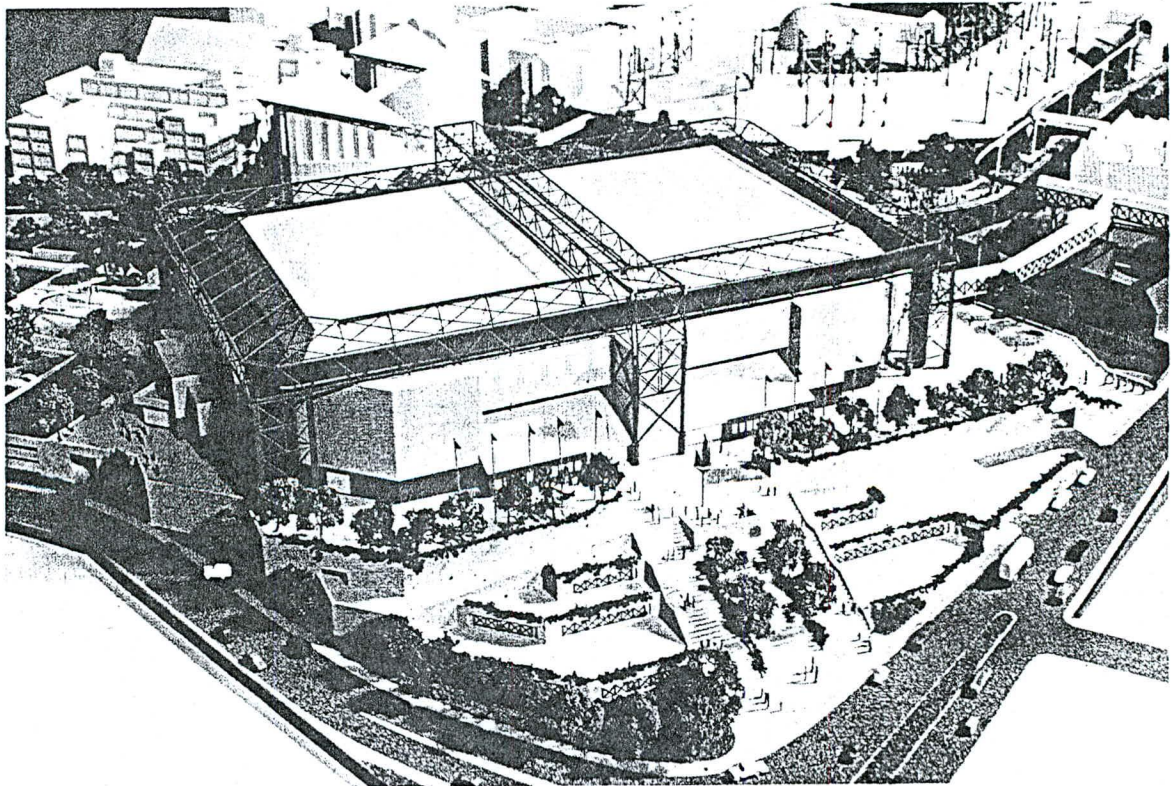
An audience of up to 4,500 can be comfortably accommodated in

tiered seating for the Opening Ceremony and Presidential Address.

POSTERS

An area of up to 3,000 square metres will be available in the National Indoor Arena in which to site the Posters.

The Poster area is adjacent to the Lecture Theatre where the main daily lecture will take place.



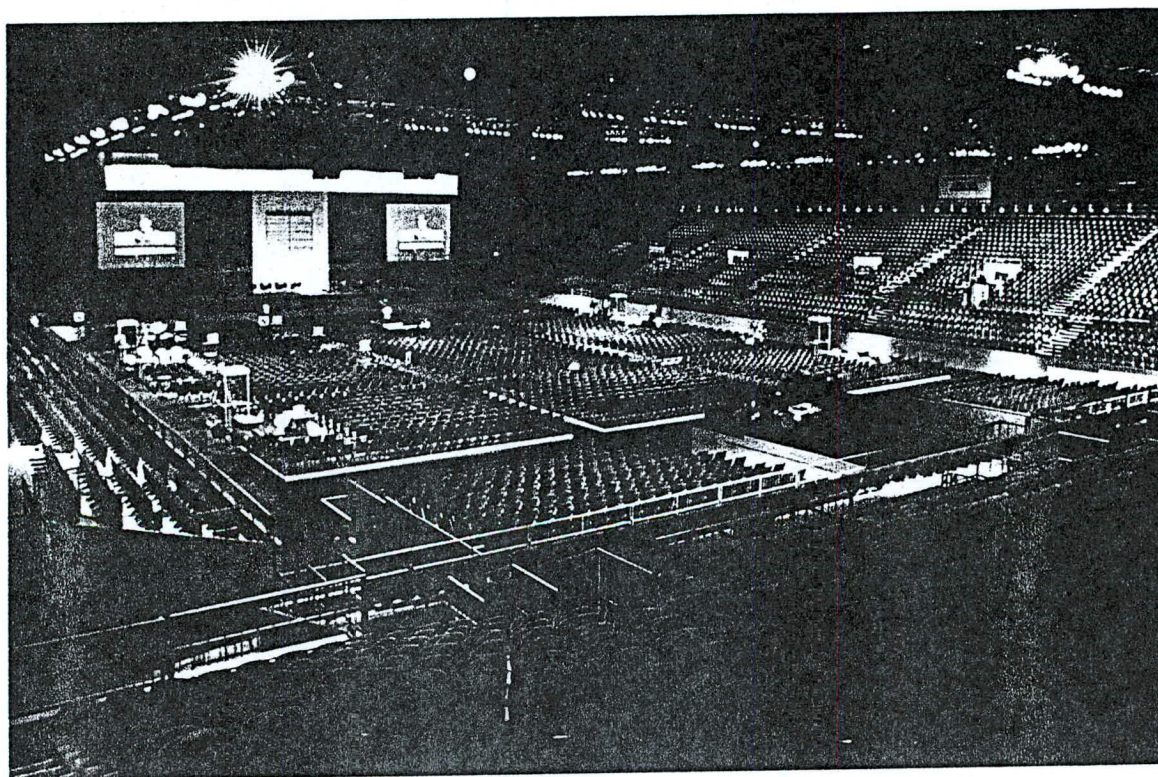
▲ THE ANSWER



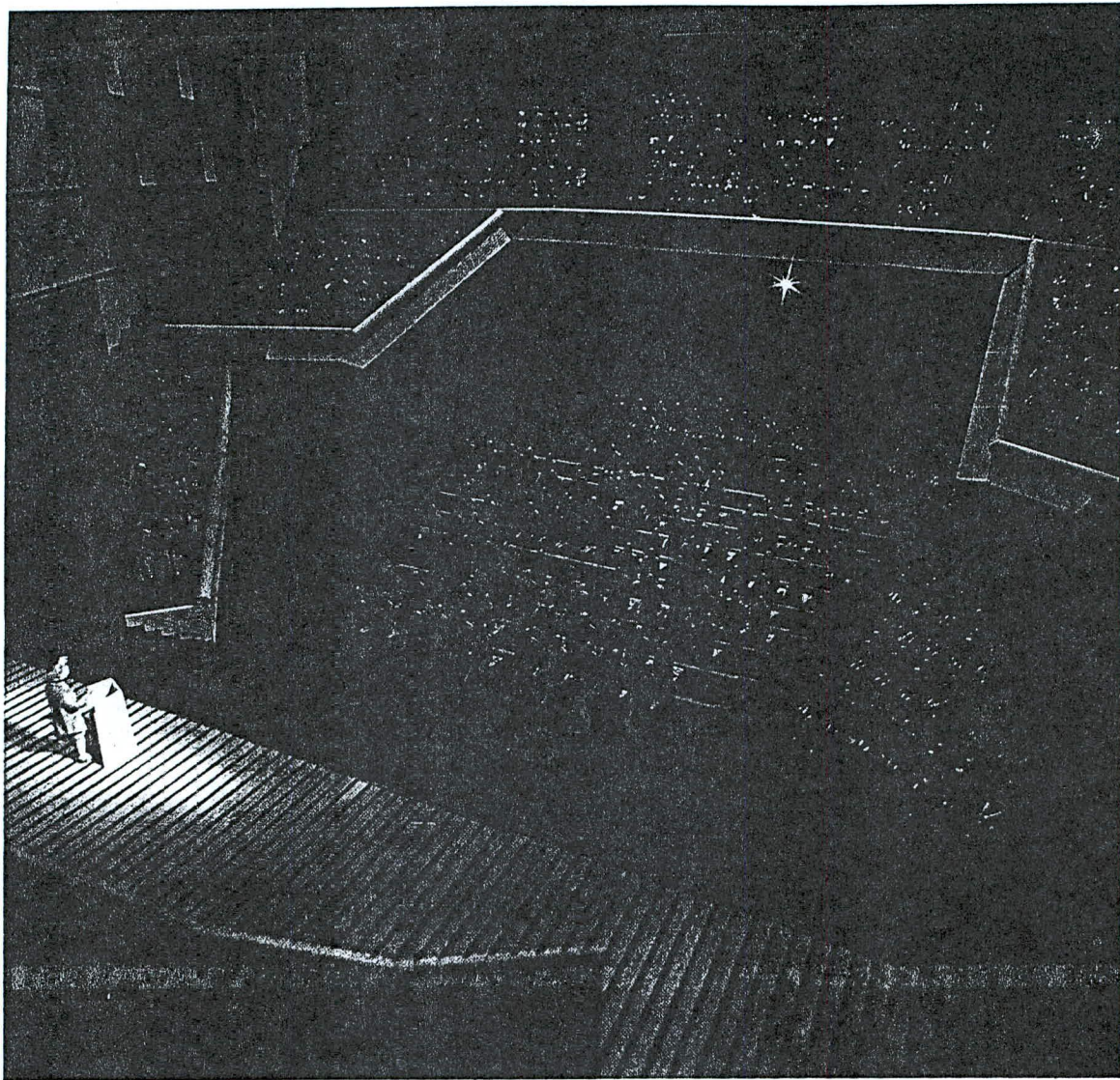
LECTURES THE NATIONAL
INDOOR ARENA

Will take place in The National Indoor Arena, located alongside the Convention Centre Complex.

Up to 4,500 delegates can attend at any one lecture and this number can be reduced to suit the final Congress delegate numbers.



THE ANSWER

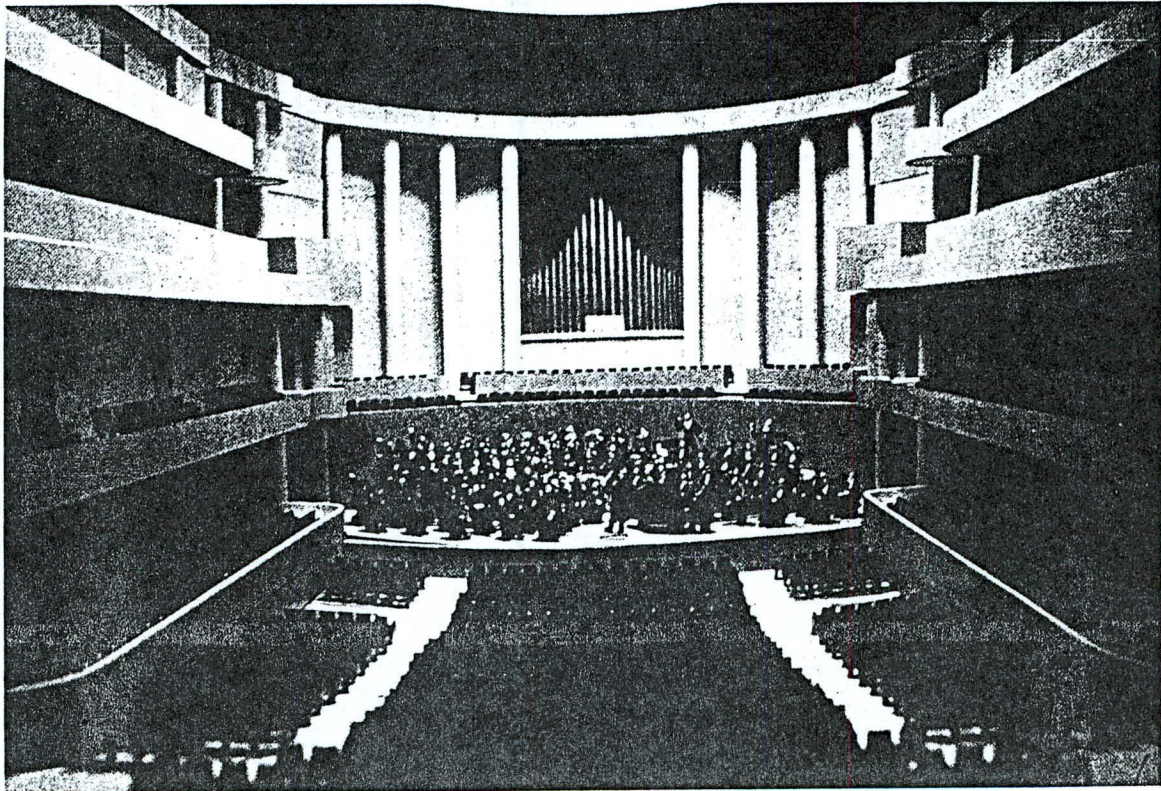


- 1,500 seats
- Massive stage and fly tower
- 12 simultaneous interpretation booths
- Range of organiser offices and dressing rooms
- High specification lighting and audio visual facilities



HALL ONE

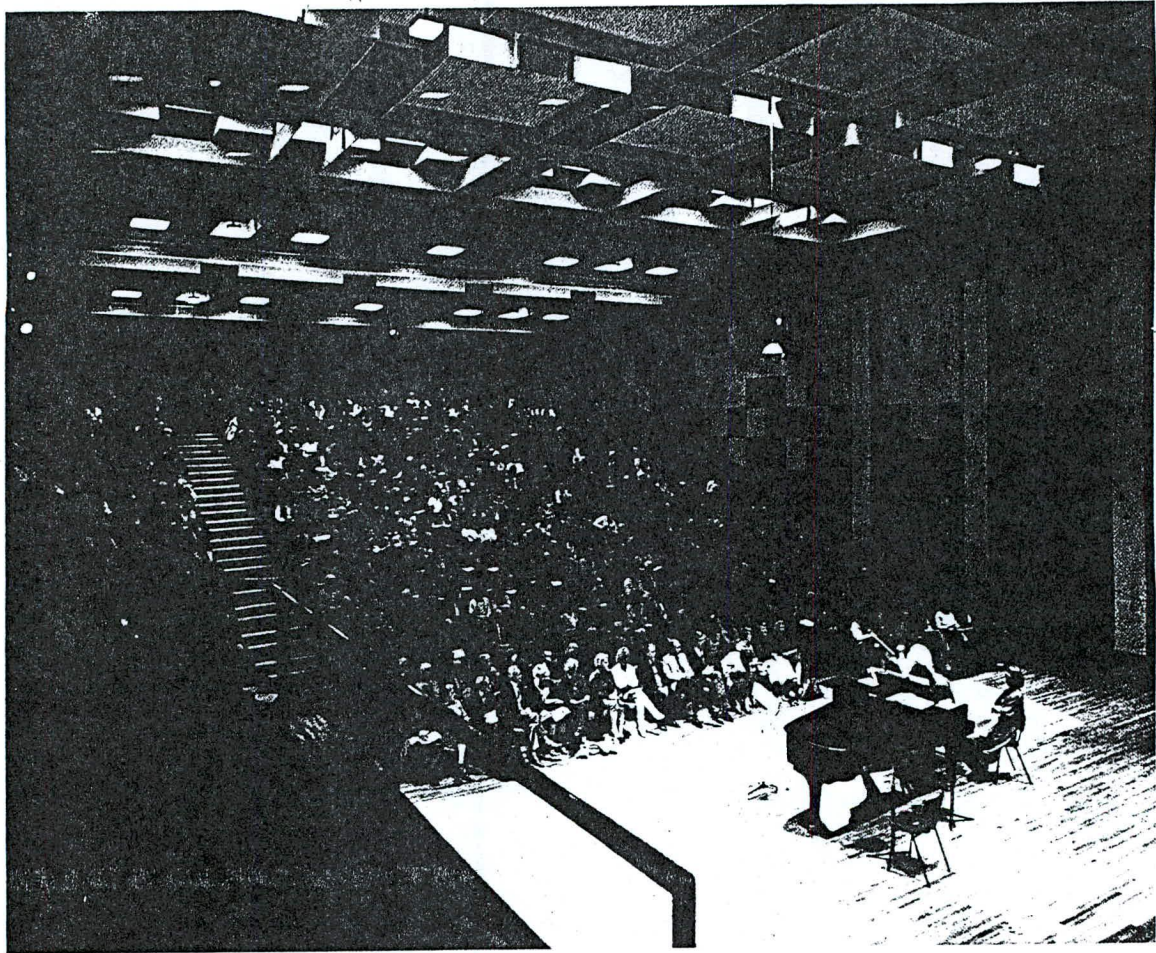
HALL TWO



- Elegant Concert Hall
- Superb acoustics
- Classical setting for plenary sessions
- Stylish seating for 2,200



ADRIAN BOULT HALL



- Raked seating capacity for 530
- Excellent acoustics
- Recording studio adjacent to hall
- High quality stage lighting and PA system
- Cloakroom facilities
- Bar and snack catering
- Located a few minutes from the Convention Centre





WORKSHOPS

A minimum of ten workshops will be used to accommodate the workshop sessions. They are:

Facility	Maximum Capacity	Type of Seating
Hall 2 ICC	2000	tiered
Hall 1 ICC	1500	tiered
Hall 4 ICC	900	flat
Adrian Boulton, Library	530	tiered
Hall 8 ICC	400	flat
Hall 11 ICC	400	flat
Hall 9 ICC	350	flat
Hall 5 ICC	300	tiered
Hyatt Hotel	300	flat
Josiah Mason, Library	288	tiered
Hall 10 ICC	250	flat
Copthorne Hotel	200	flat
Holiday Inn Hotel	150	flat
Hall 6 ICC	120	flat
Hall 7 ICC	120	flat

SYMPOSIA

A minimum of five lecture halls will be provided in which to site the five simultaneous symposia.

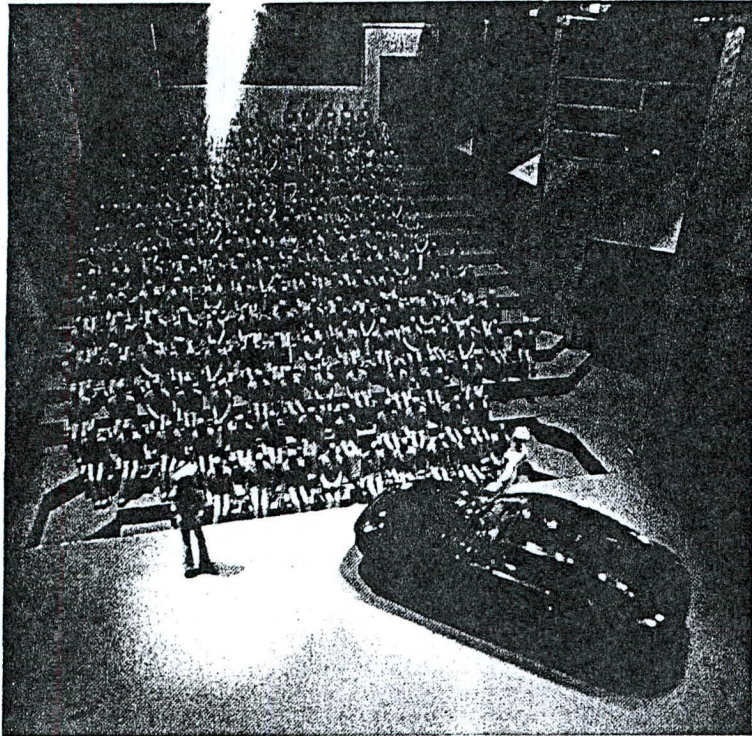
They are:

Lecture Hall	Maximum Capacity	Type of Seating
Hall 1 ICC	1500	tiered
Hall 2 ICC	2000	tiered
Hall 4 ICC	900	flat
Adrian Boulton Hall, Library	530	tiered
Hall 8 ICC	400	flat

TECHNICAL FACILITIES

All halls offer the very latest technical equipment required for a meeting of this nature.

▲ THE ANSWER



- Theatre quality staging and projection systems
- 3 built-in simultaneous interpretation booths
- An audio visual control room
- 35mm projection
- Stage access for cars
- Tiered seating for up to 300



HALL FIVE



HALL THREE –
EXHIBITION

Hall 3 at the ICC is an ideal location for the exhibition.

Hall 3 lies alongside the registration and information area and adjacent to five of the symposia theatres and workshops.

Additional snack catering and coffee points will be available throughout the exhibition hall.



▲ THE ANSWER

This organisation brings together the City's infrastructure of hotels, restaurants, theatres, travel and social programmes.

The Bureau blends the amenities of Britain's leading provincial city with the scenic beauty of the heart of England countryside, easily reached within a few minutes' travelling time.

The Bureau staff have many years' experience in handling hotel accommodation for many of the NEC's 4 million annual visitors — often dealing with thousands each day during, for example, the International Motor Show.

The Bureau has recently been contracted to deal with all of the hotel arrangements for the world famous Royal Show, which takes place at the National Agricultural Centre every July.

A full ground handling service linked to overseas travel agents is also available.

The Bureau can satisfy the special needs of the conference organiser and delegates including registration, accommodation and all related financial accounting.

The whole range of Bureau services is available to you free of charge.



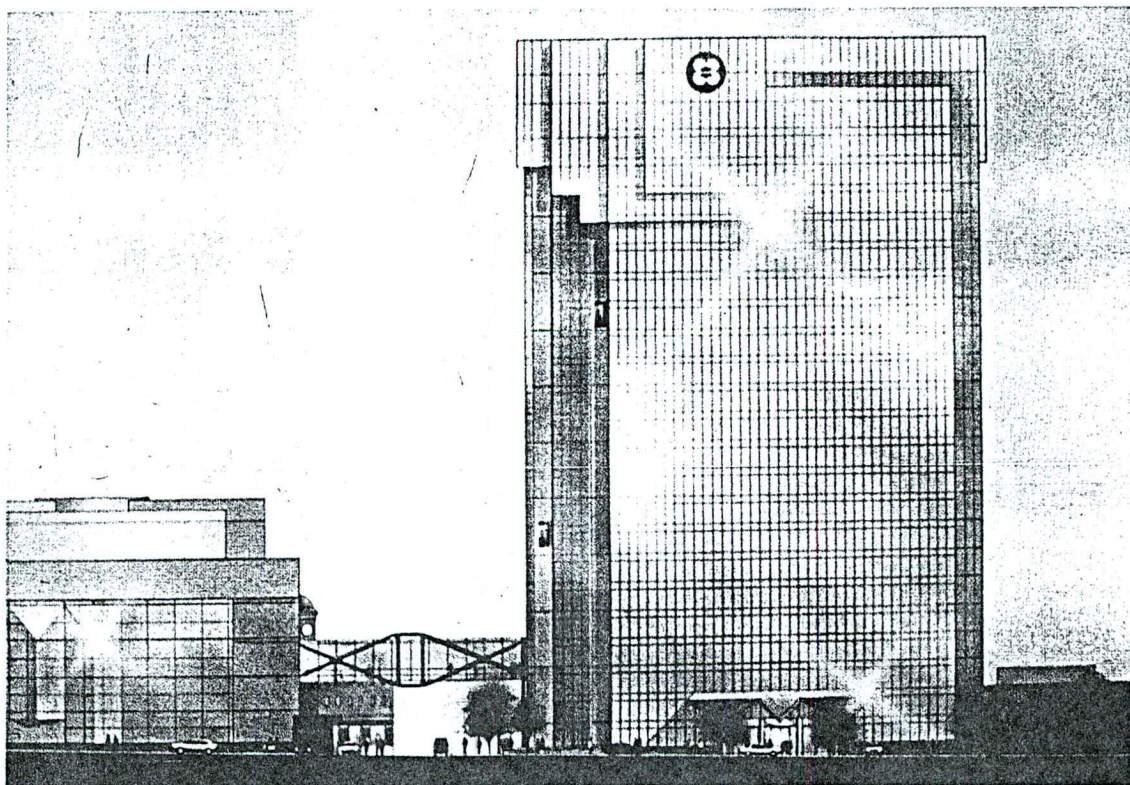
THE BIRMINGHAM
CONVENTION & VISITOR BUREAU

THE HYATT REGENCY HOTEL

An integral part of the International Convention Centre is the Hyatt Regency Hotel with its secure, direct delegate link.

This magnificent 5-star, 300 plus bedroom hotel offers every delegate comfort, containing all the facilities you would expect, including fitness centre, top class restaurant and banqueting rooms.

The perfect partner for the Convention Centre dedicated to the well being of your guests.



HOTEL ACCOMMODATION

Within a 30km radius of the International Convention Centre Birmingham, the level of accommodation amounts to 15,000 hotel beds. This ranges from 5 star city centre hotels, country hotels, university accommodation, to private houses.

This wealth and variety of accommodation has proved one of the main reasons for the success of Birmingham as a growing business tourism centre.

CONVENTION CENTRE

Hyatt Regency Hotel (5 star)
310 bedrooms

WITHIN 5 MINUTES' WALKING DISTANCE

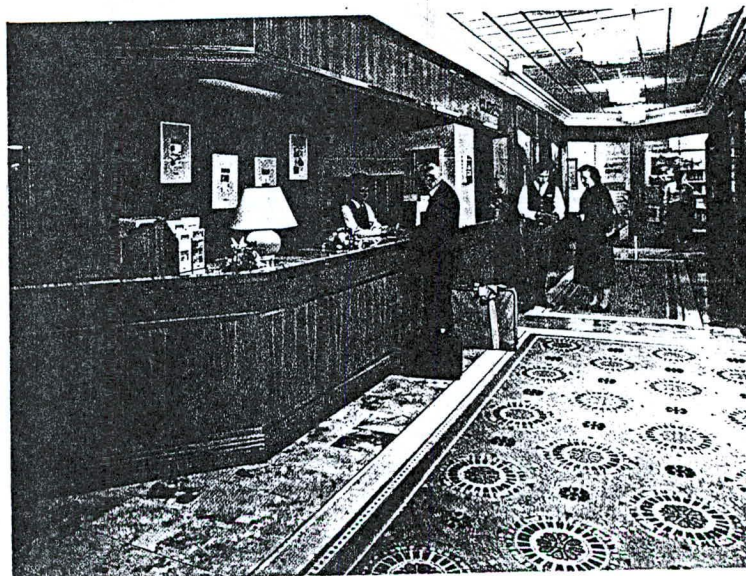
Copthorne Hotel (4 star)
214 bedrooms
Holiday Inn (4 star)
304 bedrooms
Novotel Hotel (3 star)
150 bedrooms

BIRMINGHAM CITY CENTRE

2 star - 4 star
Total of 4,360 bed spaces

WITHIN 20km

A total of 9,000 bed spaces





- Out-of-term accommodation available
- Birmingham University, Edgbaston (illustrated) has 1,500 beds
- Aston University, near Birmingham City Centre has 2,200 beds
- Birmingham University campus has a wide range of leisure and sporting facilities for guests
- Both universities are within fifteen minutes' travelling time of the International Convention Centre



UNIVERSITY ACCOMMODATION

CURRENT ACCOMMODATION PRICES

Birmingham University
Single £12.45 + VAT including
bed and breakfast

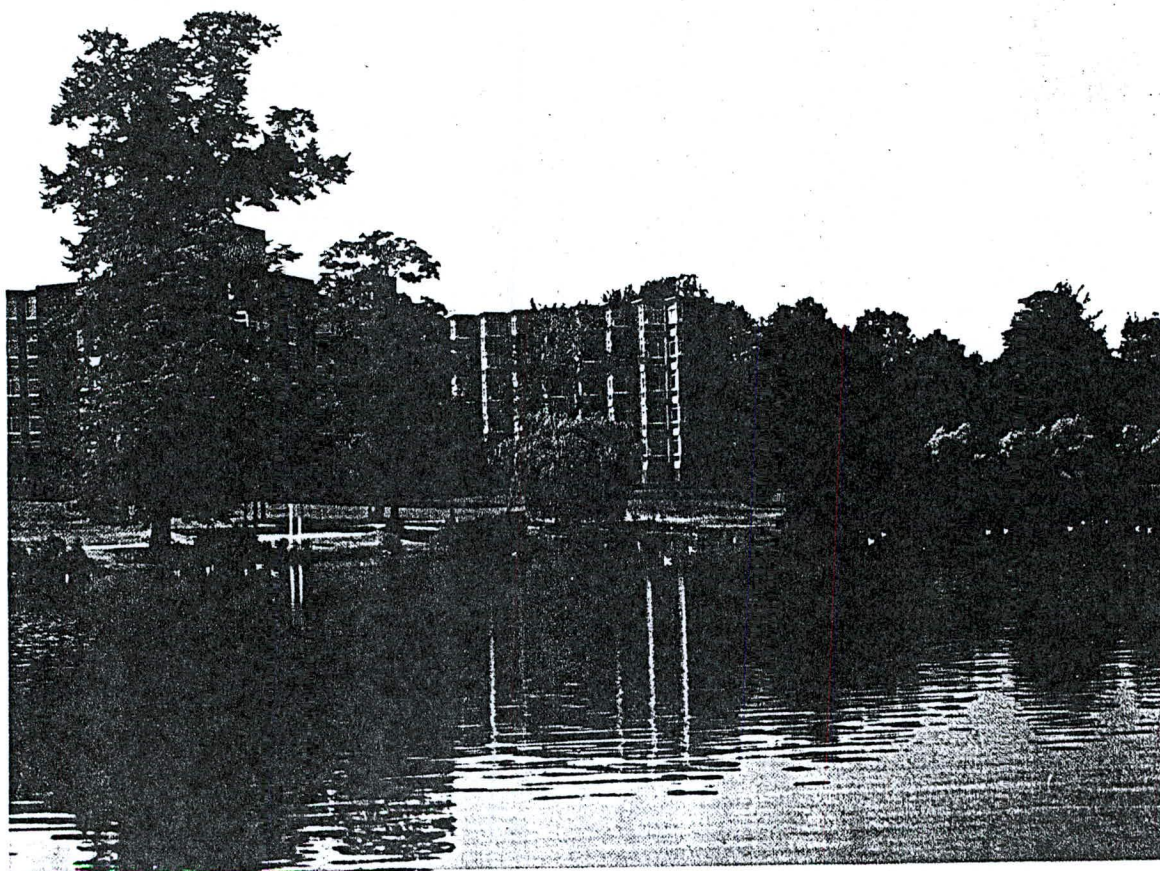
Aston University
Single £9.60 + VAT including
bed and breakfast

Aston University
Management Centre
Single £29.00 – VAT including
bed and breakfast

Warwick University
Single £12.20 + VAT including
bed and breakfast

Warwick University
Single with private bath
£17.50 + VAT including bed
and breakfast

All prices stated are at 1988 rates.
Current rate of VAT is 15%.



SECURITY

The security operation developed over the past 12 years at the National Exhibition Centre will be expanded to encompass the International Convention Centre. The experience of the security force is probably unrivalled in this country as it can draw on resources capable of handling the International Motor Show, frequent Royal visits and a wide range of specialist functions.

Security operations will be on two levels — general 24-hour surveillance covering the entire Convention Centre complex, plus the specific deployment of security officers to provide a programmed security operation to meet the needs of an individual conference.



FACILITIES NEAR TO THE
CONVENTION CENTRE

In addition to the special catering arrangements for individual conventions, there is a self-service restaurant and Food Court located on The Mall with views overlooking the canal.

Within five to ten minutes walk of the Centre there are many individual eating establishments varying in price and choice from a wholesome pub lunch to a snack in a coffee bar, or a full meal in an excellent restaurant or hotel.

A selection of these includes:

James Brindley Public House

The Crown Public House
(on site)

The Prince of Wales
Public House

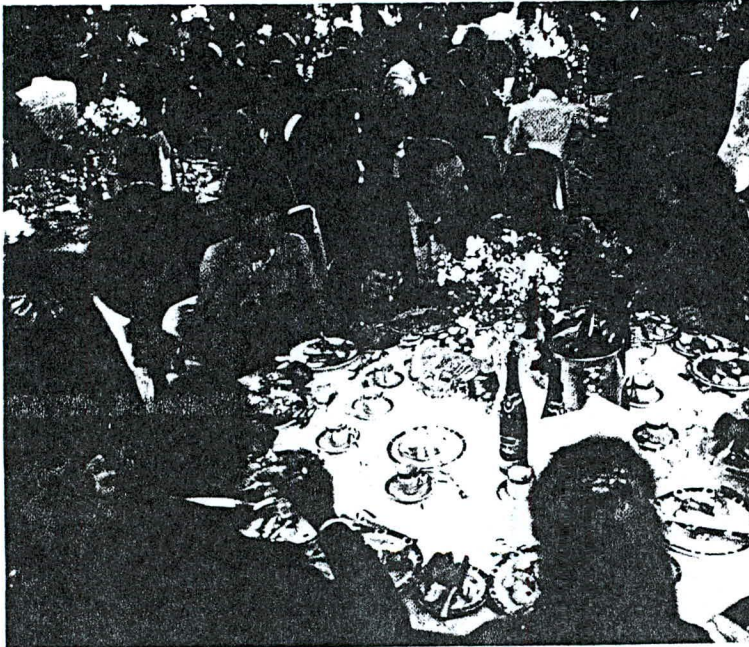
Arthur's Restaurant and
Wine Bar

Brannigans Restaurant/Bistro

Copthorne Hotel,
Restaurant and Bar

Holiday Inn Restaurant,
Coffee Shop and Bar

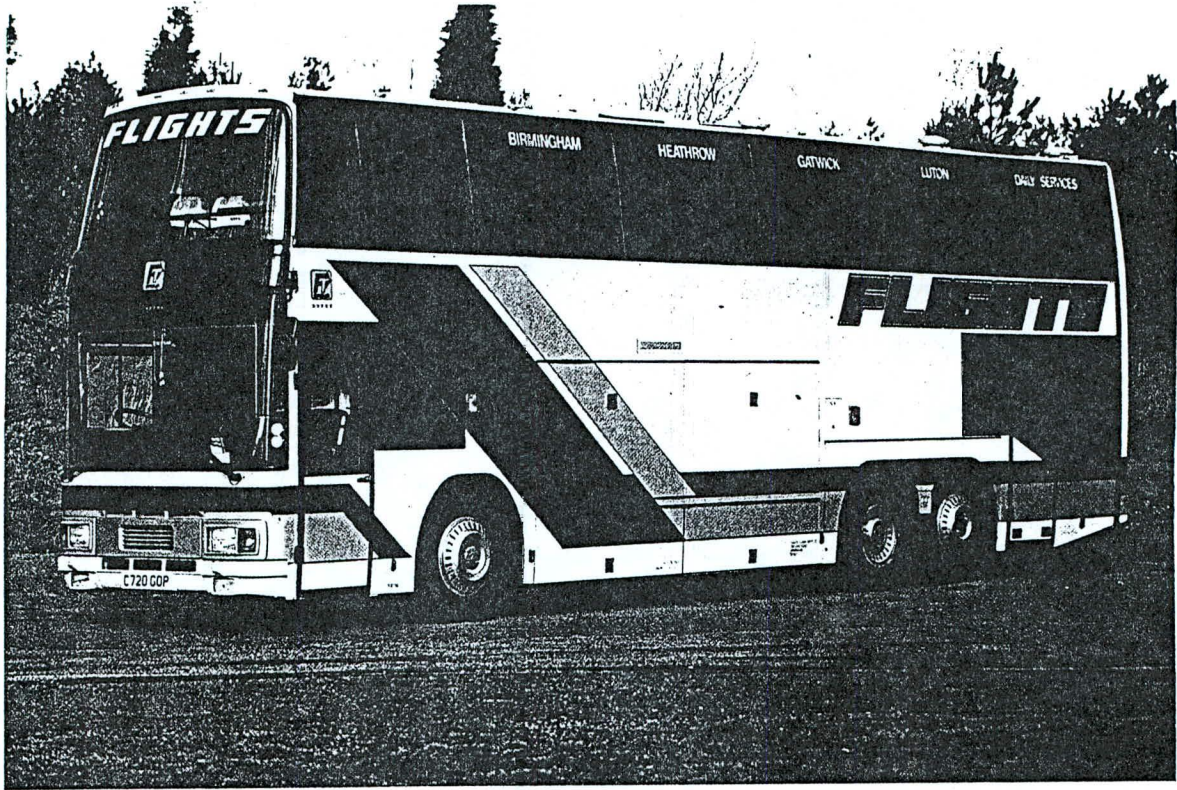
Repertory Theatre Bistro



When the plans for the National Indoor Arena development are finalised, the area is expected to include numerous restaurants, cafes, wine bars and bistros in addition to those planned between now and 1991.



CATERING



AIRPORT

Delegates arriving at the new Birmingham International Airport can transfer to the city centre quickly and efficiently in several ways.

Birmingham International Railway station lies alongside the airport and is reached by MAGLEV direct from the terminal building into the station concourse in 90 seconds. A regular train service transports delegates into the city centre within 10 minutes.



West Midlands Travel operates a public bus service from the airport terminal into the city centre.

A specially developed bussing schedule can be arranged to convey delegates from the airport to their conference hotels or direct to the International Convention Centre

RAIL

Passengers travelling by train will arrive at Birmingham New Street Station in the heart of the City. The Convention Centre and city centre hotels are a few minutes by taxi or bus.

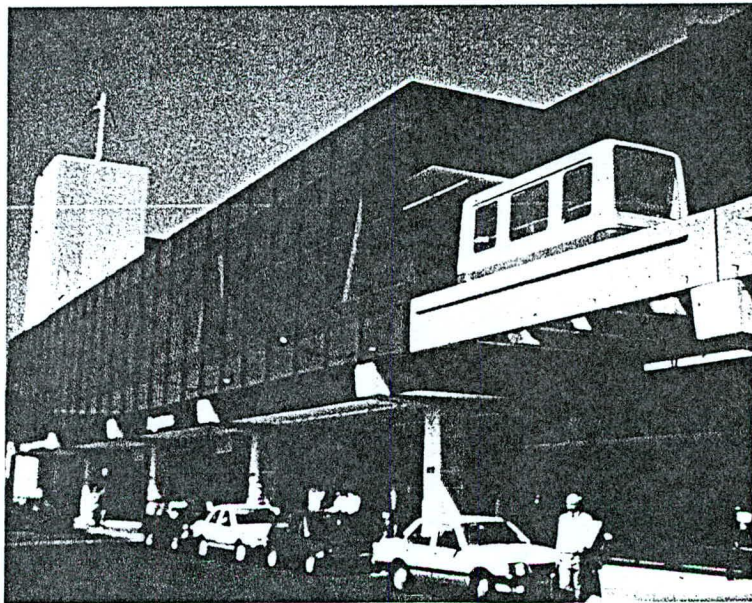
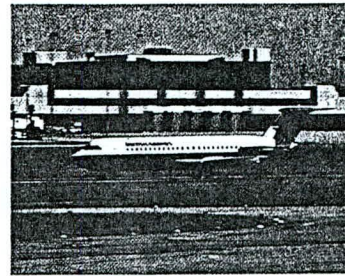
GROUND HANDLING

TRANSPORT LINKS - INTERNATIONAL

AIR

Birmingham International Airport's new terminal was opened in 1984 and currently handles over 3 million passengers a year. Transfer from the Airport to the city centre is easy and swift. The airport lies adjacent to Birmingham International Railway Station, which is directly linked to the terminal by 'MAGLEV', the unique frictionless magnetic transport system. Transfer to the station on MAGLEV takes less than two minutes and the train journey into the Centre takes just twelve minutes.

Regular coaches and buses also serve the city centre.





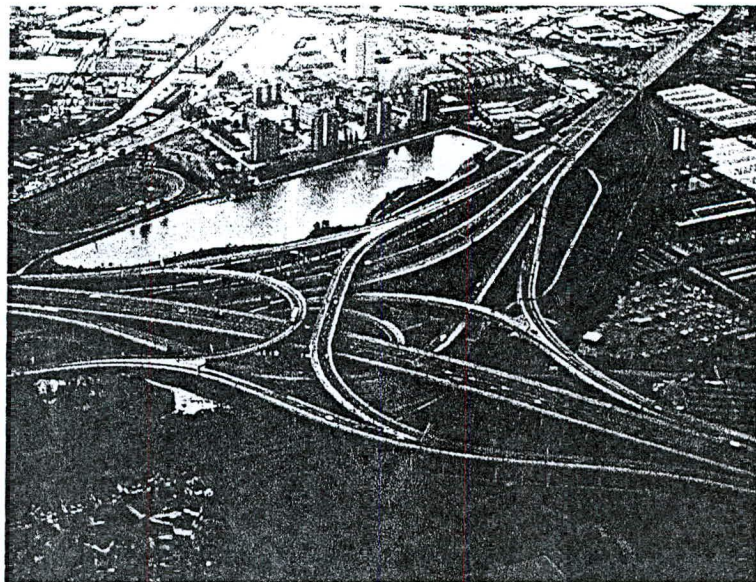
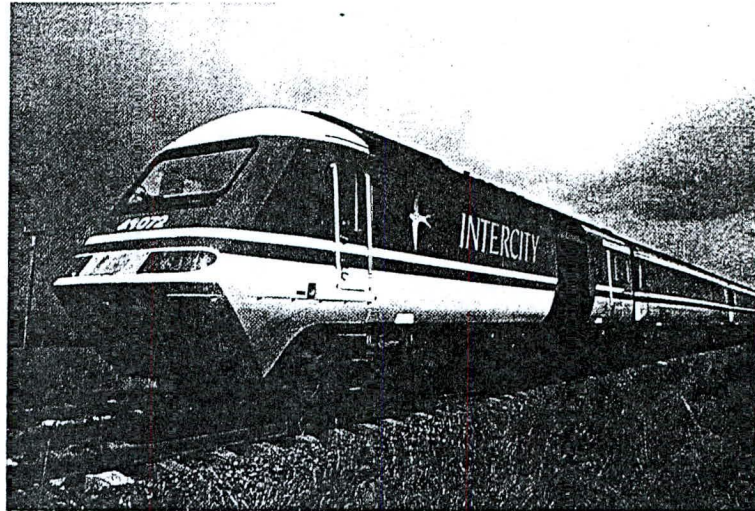
Conference delegates can arrive in the City by road, rail and air – all of which are exceptionally convenient for the International Convention Centre.

ROAD

The M5, M6 and M1 motorways converge just a few minutes from the Convention Centre. This motorway system links up with the M69, M42 and, by 1991, the M40 making accessibility by road swift and easy.

RAIL

Birmingham is the focus of British Rail's Inter-City network and fast services operate – at half hour intervals – between Birmingham city centre and the heart of London in just 90 minutes. The rail network also links Scotland and Wales, the North and South West by way of the Inter-City 125.



TRANSPORT LINKS - UK



Birmingham and the surrounding Heart of England offers an enormous scope of attractions, which can be blended to create interesting, educational and simply pleasurable itineraries.

A region of great beauty and historical interest, the following gives you a glimpse of the area and the range of attractions and programmes we can offer a group or individual traveller.

PLACES OF INTEREST

BIRMINGHAM BY DAY AND NIGHT

BY DAY

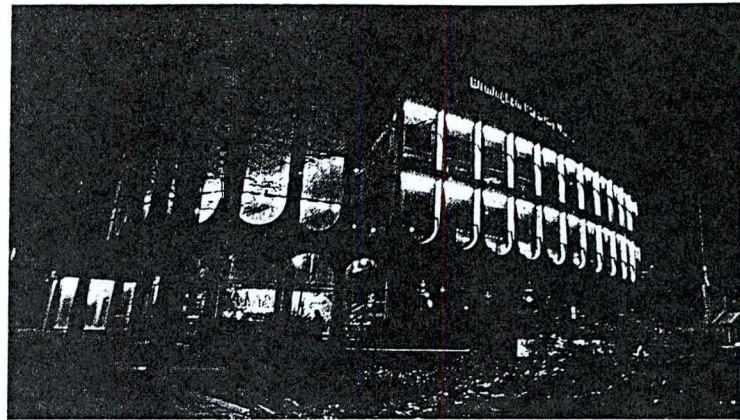
BIRMINGHAM MUSEUM AND ART GALLERY

The Art Gallery has a fine collection of paintings and drawings from the 14th to 20th Century, including a most important collection of works by the Pre-Raphaelite School. Applied Arts includes Costumes, Silver, Ceramics and Textiles.

The museum houses an impressive display of natural history exhibits.

BIRMINGHAM BOTANICAL GARDENS

There are over 14 acres of ornamental gardens designed by John Claudius London in 1832. These include tropical glasshouses containing rare and exotic plants, a large palm house, and cacti house.



BIRMINGHAM MUSEUM OF SCIENCE AND INDUSTRY

The James Watt Building houses the world's oldest working steam stationary engine. The Engineering Hall has working steam stationary engines, machine tools, gas and working hot-air engines and many engineering products.

SHOPPING

Shopping in Birmingham is a real pleasure. The City boasts an extensive variety of shops including branches of the UK's best known stores. A huge antique market – one of the biggest in the country – attracts visitors from Europe and the USA.

BY NIGHT

THEATRES

Birmingham's three theatres offer a wide choice of entertainment for the conference delegate, including ballet, contemporary dance, musicals, new plays and concerts.

The Birmingham Hippodrome is the Midlands' base for Welsh National Opera, Sadlers Wells Royal Ballet and London Contemporary Dance Theatre.

NIGHT CLUBS

Over a dozen night clubs offer top name live entertainment, discos and jazz venues of every shape and size.

RESTAURANTS

Birmingham is a city that draws its character from many cultures and both English and International cooking are provided for in a huge variety of restaurants, including French, Greek, Italian, Indian, Caribbean, Chinese, Spanish and American.

STRATFORD-UPON-AVON



SHAKESPEARE'S BIRTHPLACE

Although altered and restored since Shakespeare's day, this half-timbered building is furnished in period style and contains many fascinating books, manuscripts and objects.



ANN HATHAWAY'S COTTAGE

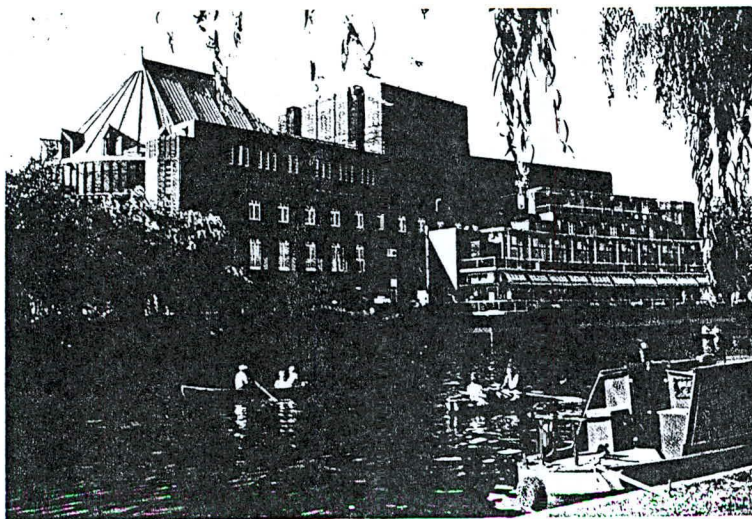
Shottery, Stratford-upon-Avon. Set in an old fashioned English garden at Shottery, the early home of Shakespeare's wife is an excellent example of an English thatched farmhouse containing family furniture and relics.

MARY ARDEN'S HOUSE

Wilmcote, Stratford-upon-Avon. The home of Shakespeare's mother and an outstanding example of a museum of rural life.

THE WORLD OF SHAKESPEARE

The World of Shakespeare is a £1,000,000 audio visual theatre dramatically bringing to life the momentous period of English history which inspired Shakespeare to produce his greatest works. This twenty-five minute production provides an ideal start for any visit to Stratford, giving an insight into the life of a young William Shakespeare and the times of later Tudor England.



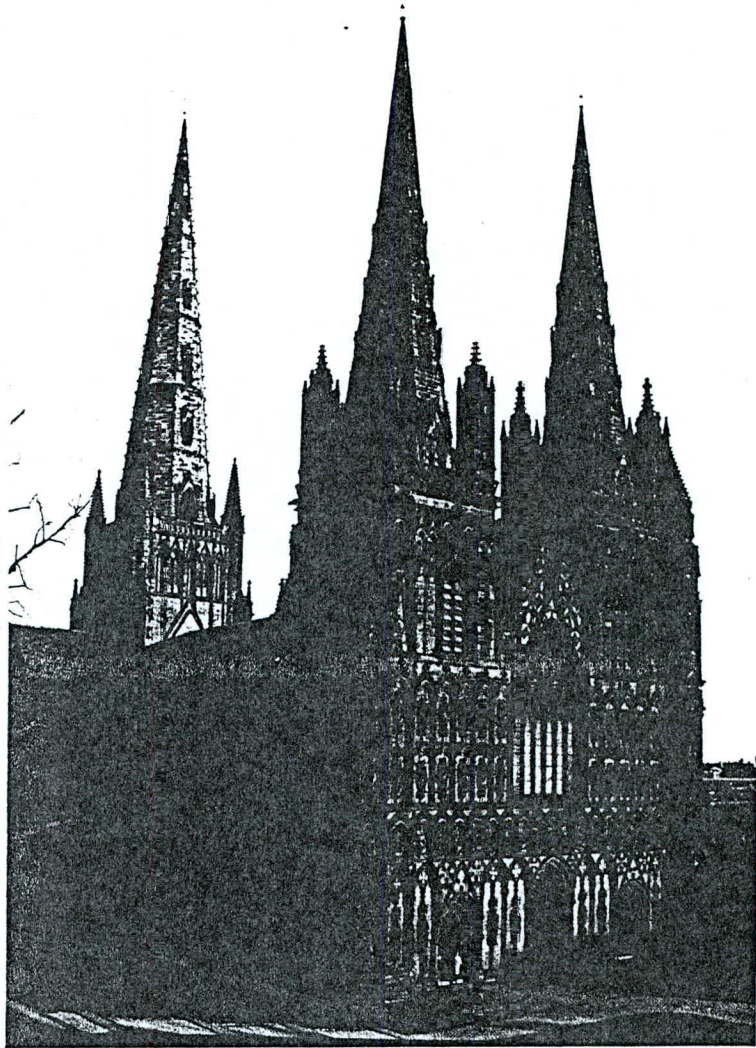
ROYAL SHAKESPEARE THEATRE

Home of the world famous Royal Shakespeare Company with a season of four or five new Shakespeare productions from the end of March to the end of January. Gallery and backstage tours are available, depending on play schedules. Exhibition of RSC costumes, props, photographs, paintings and stage items in an exciting setting.



LICHFIELD CATHEDRAL

Lichfield Cathedral has one of the most picturesque settings of any cathedral in England. It is the third cathedral on the site. The first one, consecrated in 700, enshrined the bones of St. Chad, and there they have remained in successive cathedrals until the time of King Henry VIII. The building is a magnificent Gothic structure which was started 800 years ago and took 150 years to finish. The cathedral has three towering spires — unique to an ancient cathedral in England.

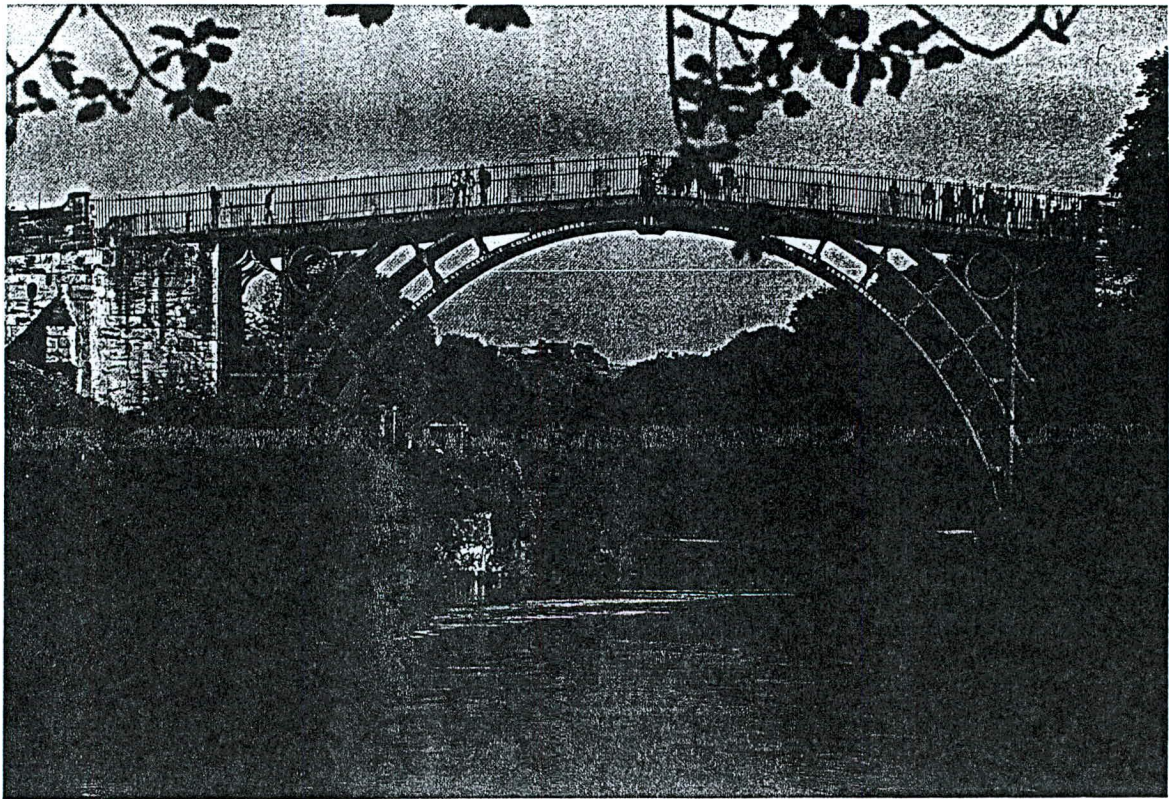


▲ LICHFIELD

IRONBRIDGE

IRONBRIDGE GORGE AND MUSEUMS

In 1709 Abraham Darby first smelted iron using coke, thus making the technical breakthrough which led to the beginnings of the Industrial Revolution here in the Ironbridge Gorge. Today, the area contains a series of unique museums, including the first iron bridge ever built.



The Cotswolds is one of the finest areas of unspoilt countryside in England. It has a distinctive character all of its own, created by the use of honey-coloured stone in its building and abundant dry-stone walls.

The villages of Broadway, Chipping Campden and Bourton-on-the-Water are world famous, but smaller 'undiscovered' villages like Stanton, Snowhill and Bisley offer true 'local' character.

The Cotswolds are justly famous for inns with a blazing log fire and friendly surroundings.

As for antiques, the region has probably more genuine antique shops than anywhere else in England.

The medieval wool trade was the important source of wealth to the whole area. The export of Cotswold wool flourished during the thirteenth, fourteenth and fifteenth centuries creating some fabulously rich wool merchants. Their legacies are the magnificent wool churches with their towering perpendicular spires and the fine town houses.

Eventually it became a rural backwater, largely untouched by development throughout the later centuries. The area has been designated as one of Outstanding Natural Beauty.

Surrounding the Cotswold Hills are some of England's finest cathedral cities and spas, including Gloucester, with fascinating glimpses of its Roman origins, and Cheltenham, England's most beautiful Regency town.



THE COTSWOLDS

VENUE PLUS

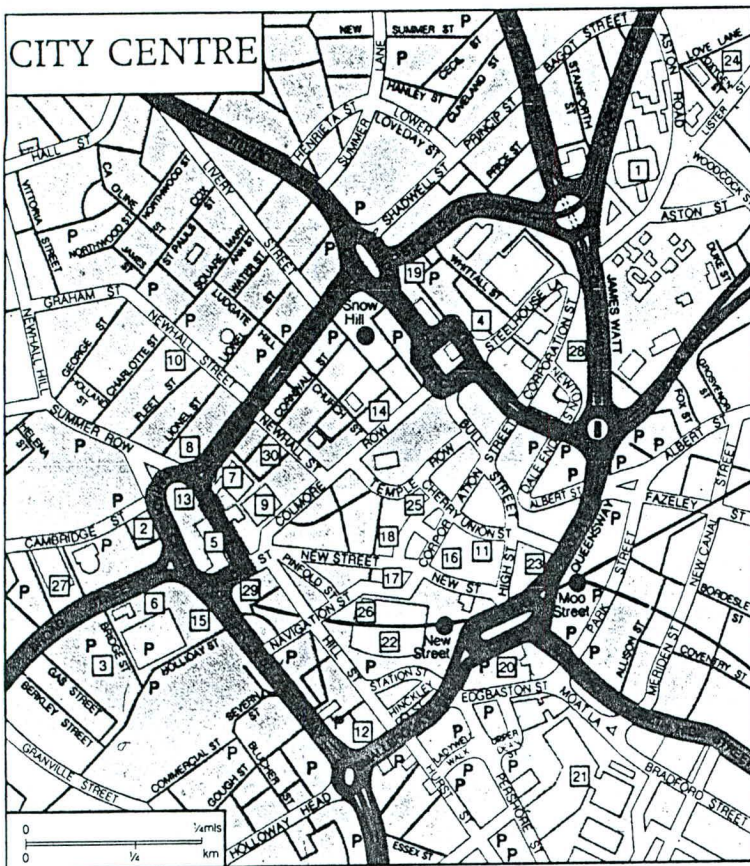
The International Convention Centre has developed a support programme to assist Associations or Companies who have little or no experience in organising a National or International Conference.

An information leaflet, detailing the wide range of services that are available, ranging from developing a conference programme to travel arrangements is available and covers such essential areas as:

- Preparation of Registration Documents
- Printing
- Exhibition organisation
- Ground handling
- Social programme
- Hotel booking
- Translation service/ interpreters
- Audio Visual equipment
- Conference programme



CITY CENTRE



STATIONS

- Moor Street
- New Street
- Snow Hill



GENERAL

- 1 Aston University
- 2 Baskerville House
(Development Department)
- 3 Birmingham Convention
and Visitor Bureau
- 4 Birmingham Post and Mail
- 5 Central Library
- 6 Central TV
- 7 City of Birmingham
Museum and Art Gallery
- 8 College of Food and
Domestic Art
- 9 Council House
- 10 Museum of Science and
Industry
- 11 Tourist Information Centre

HOTELS

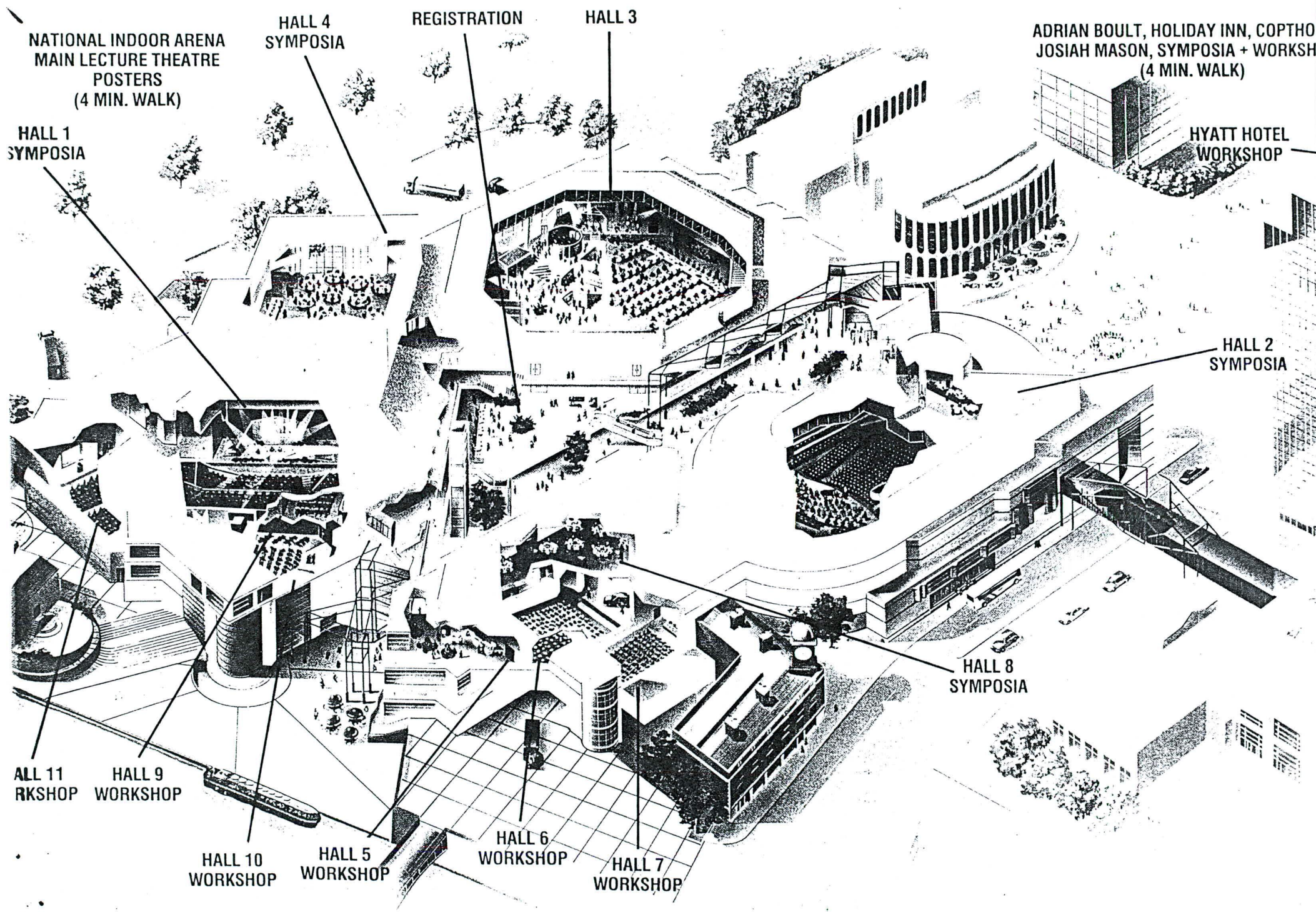
- 12 Albany
- 13 Cophorne
- 14 Grand
- 15 Holiday Inn
- 16 Ladbroke International
- 17 Midland
- 18 New Imperial
- 19 Royal Angus

SHOPPING CENTRES

- 20 Bull Ring
- 21 Markets Area
- 22 Pallasades
- 23 Pavillions

BUSINESS

- 24 Aston Science Park
- 25 Bank of England
- 26 Dept. of Trade and Industry
Offices
- 27 International Convention
Centre
- 28 Job Centre
- 29 Post Office
- 30 Stock Exchange



NATIONAL INDOOR ARENA
MAIN LECTURE THEATRE
POSTERS
(4 MIN. WALK)

HALL 4
SYMPOSIA

REGISTRATION

HALL 3

ADRIAN BOULT, HOLIDAY INN, COPTHO
JOSIAH MASON, SYMPOSIA + WORKSH
(4 MIN. WALK)

HALL 1
SYMPOSIA

HYATT HOTEL
WORKSHOP

HALL 2
SYMPOSIA

HALL 8
SYMPOSIA

ALL 11
WORKSHOP HALL 9
WORKSHOP

HALL 10
WORKSHOP

HALL 5
WORKSHOP

HALL 6
WORKSHOP

HALL 7
WORKSHOP





SANTIAGO, Marzo 29 de 1993.

Señor
DIRECTOR ADMINISTRATIVO DE LA
PRESIDENCIA DE LA REPUBLICA
DON MARIANO LACALLE
Presente

REPUBLICA DE CHILE			
PRESIDENCIA			
REGISTRO Y ARCHIVO			
NR.	93/6729		
A:	31 MAR 93		
P.A.A.	<input type="checkbox"/>	RCA	<input type="checkbox"/>
C.B.E.	<input type="checkbox"/>	MLP	<input checked="" type="checkbox"/>
M.T.O.	<input type="checkbox"/>	EDEC	<input type="checkbox"/>
M.Z.C.	<input type="checkbox"/>		

Distinguido Señor:

A través de la presente solicito a Ud. tenga a bien proporcionarnos fotografías de Su Excelencia el Presidente de La República, Don Patricio Aylwin; las cuales serían expuestas en las oficinas de la Bancada de Diputados Demócrata Cristianos.

Distraigo su atención con esta solicitud debido a que, anteriormente nos dirigimos al D.A.E. para adquirirlas, en donde nos refirieron a Ud. por no contar con existencia de ellas.

Espero que la presente tenga favorable acogida. Mucho le agradeceré informarnos de esta petición a los teléfonos 697-2846 ó 695-4128.

Le saluda cordialmente.

JOSEFINA HONORATO C.
Secretaria Bancada de Diputados
Demócrata Cristianos

Comité
DEMOCRATA CRISTIANO
Cámara de Diputados

jhc/